



MARKED

Breeding and Culling

BREEDS

By Kelli Slack

2009

WHAT IS A MARKED BREED?

- Marked (def.)- a rabbit, usually white, which is broken up by an orderly placement of another color or colors
 - Also includes rabbits that carry the tan pattern
- Not to be confused with a broken pattern animal



MARKED BREEDS

- Blanc de Hotot
- Checkered Giant
- Dutch
- Dwarf Hotot
- English Spot
- Himalayan
- Rhineland
- Tan



WHAT SHOULD I LOOK FOR?

- Show
 - Best balance of Type and Markings
- Breeding
 - Best type
- Culling
 - Bad Type and/or Bad Markings
- Keeping
 - Show = best balance of type and markings
 - Breeding = best type



BLANC DE HOTOT

- Commercial
- 6-Class
- Rare Breed
- Distinguished by Black eyebands
- Marking DQs:
 - Spots
 - Incomplete Eyebands
 - Eyebands wider than 3/16"
 - Absence of eyeband(s)
 - Any color other than black



CHECKERED GIANT

- Full Arch
- 6-Class
- Markings:
 - Side markings, spine, ears, butterfly, eye circles, cheek spots
- Marking DQ's:
 - Three colors, Marking connections, Stray spots
 - Missing marking
 - More than one break or break over $\frac{1}{4}$ "
 - Split butterfly, white lip
 - Double or missing cheek spot
 - Markings on front legs



DUTCH

- Compact
- 4-Class
- Markings:
 - Blaze, Cheeks, Neck, Saddle, Undercut, Stops, Hairline
- Marking DQs:
 - Tied Elbow
 - Split Stop
 - Bare Spot
 - Spots



DWARF HOTOT

- Compact
- 4-Class
- Distinguished by Black and Chocolate eyebands (Blue is being presented)
- Marking DQs:
 - Spots
 - Incomplete eyebands
 - Eyebands with excessive feathering



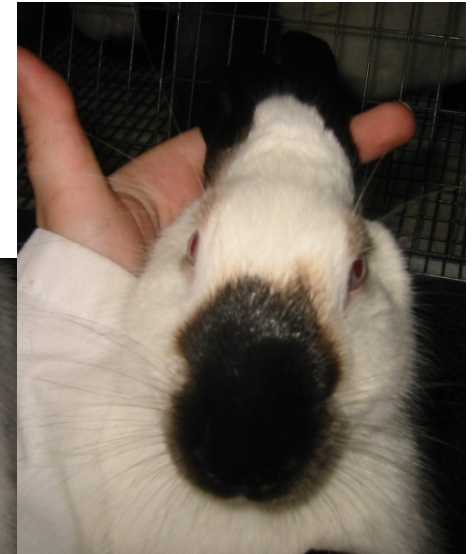
ENGLISH SPOT

- Full Arch
- 4-Class
- Markings:
 - Butterfly, eye circles, cheek spots, ear markings, spine, side pattern(sweep)
- Marking DQs:
 - Connection between head markings, 2+ stray head spots
 - Split butterfly, white spot in butterfly
 - Absence of either eye circle
 - Double, split, or missing cheek spot
 - White spots in upper ½ of ear
 - More than 1 break in spine, break that exceeds ¼”
 - Side markings missing on one or both sides



HIMALAYAN

- Cylindrical
- 4-Class
- Markings:
 - Head
 - Ears
 - Front feet & legs
 - Hind feet & legs
 - Tail
- Marking DQs:
 - Smut
 - White spots in markings



RHINELANDER

- Full Arch
- 4-Class
- Markings:
 - Side markings, spine, butterfly, cheek spots, ear markings, eye circles
- Marking DQs:
 - Absence of any markings, markings that do not exhibit both colors
 - Less than 3 spots on either side, Spot on front legs, 2+ spots on shoulder
 - 2+ breaks in spine, break longer than $\frac{1}{2}$ "
 - White spot in butterfly
 - Double cheek spot
 - Eye circle connected to any other head marking



TAN

- Full Arch
- 4-Class
- Shown Lilac, Blue, Chocolate, Black
- Markings:
 - Triangle & collar, chest, side demarcation, eye circles, nostrils & jowls, brindling, front and hind legs and feet, ears and tan pea spots
- Marking DQs:
 - White spots

